

SC-350

AUTO SHEET FEED DIGITAL DIE CUTTER



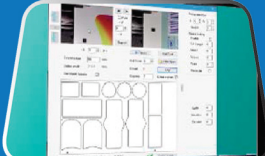
Double blade cutter



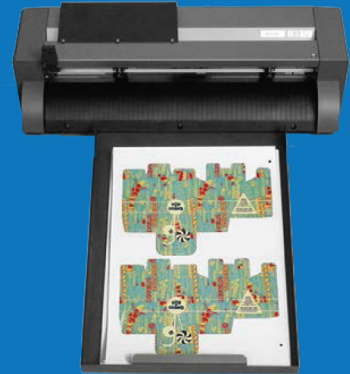
High capacity paper feeder



Supports 10 languages



Vision control software



DIGITAL DIE CUTTER

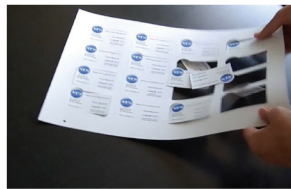
Features

- Cutting Mode: Half Cut for Adhesive Sheets. Perforated Cut for tear off or raffle tickets. Heavy Cutting for all kind of cards including business card, shaped business cards and small boxes, clothing and bag tag.
- Auto Sheet Feed: The system is equipped with an internal vacuum compressor, which does not require external air connections.
- Auto Sheet Feed Function: additional sheets may be added without having to stop the machine.
- Total dimension including exit tray 45.66" (116 cm)
- Minimum space required for feet positioning 26.37" (67cm)
- Table space length 31.89" (81cm)

Examples of cut outs



Perforated cut



Business card



Half cut (sticker)



Box cut

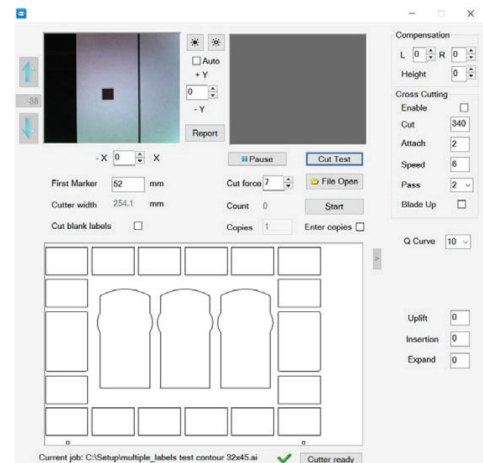


Bag tag

Specification

| | |
|------------------------|--|
| Auto sheet capacity | 100 sheets - with auto feeder |
| Sheet separation | Air powered, variable jet stream separation |
| Media alignment | Media table, slide adjustment for size with self centering guides |
| Media width (min-max) | 10.98" - 13.77" (279 - 350mm) |
| Media length (min-max) | 8.25" - 19.68" (210 - 500mm) |
| Interface & Software | Gemini Software (PC only (Windows x32 and X64) Win 7, Win 8.x, Win 10) cutter management tool |
| Registration system | High resolution CCD vision system consisting of a camera, which reads the registration marks on the media, and compares the position with the original value from the digital file. The Gemini software then acts accordingly to correct the linear and angular positional differences but automatically adjusting the cut lines |
| Registration mark(s) | 4mm x 4mm square registration mark (2 marks required: origin at top of sheet, and scale/skew at end of sheet) |

Cutter Management tool



ASPAC VENTURES OPC

Address: Suite 501 E State Center Bldg.,
333 Juan Luna St., Binondo, Mnl. Philippines 1006
Website: www.aspacventures.com

Tel: +632 8 245-9924
Fax: +632 8 242-3977
Email Address: sales@aspacventures.com