

## PB-600 Perfect Binder



## PB-554 Perfect Binder



### Specification

#### PB-600 Perfect Binder

Max Binding Length	420 mm
Max Binding Thickness	60 mm
Binding Speed	350 books/hr
Milling Cutter	SML+MIL Cut
Machine Size	1600*600*1100mm
Power	200 W
Power Supper	220 V



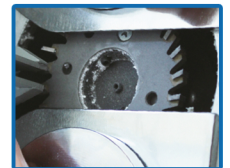
SIDE GLUE SYSTEM



TOUCH SCREEN



OPEN COVER CLAMP PLATFORM



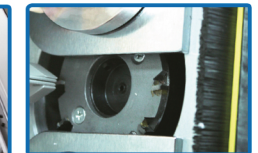
DUAL BLADES SYSTEM

#### PB-554 Perfect Binder

Max Binding Length	320 mm
Max Binding Thickness	55 mm
Binding Speed	300 books/hr
Milling Cutter	SML+MIL Cut
Machine Size	1300*480*980mm
Power	1200 W
Power Supper	220 V



SIDE GLUE SYSTEM



DUAL BLADES SYSTEM



OPEN COVER CLAMP PLATFORM

### ASPAC VENTURES OPC

Address: Suite 501 E State Center Bldg.,  
333 Juan Luna St., Binondo, Mnl. Philippines 1006  
Website: [www.aspacventures.com](http://www.aspacventures.com)

Tel: +632 8 245-9924  
Fax: +632 8 242-3977  
Email Address: [sales@aspacventures.com](mailto:sales@aspacventures.com)